

Product Description / Intendend Use

- The ELREHA Gateway serves as a frontend of a cooling plant by communication with control systems via interfaces. It prepares all recorded values and presents them on websites
- The ELREHA Gateway is designed to connect all ELREHA control systems with RS-485 interfaces
- To view, to adjust and to call up the values only a current browser is necessary
- Recording of alarm/state messages and measuring values
- Alarm messages can be sent by Email
- It can be integrated in PC networks by an ethernet connection
- All PC's in this network are able to access to all information
- In this way it is possible to connect and access the ELREHA Gateway to the internet
- 4x USB, 2x Ethernet
- The Web Gateway is provided for dry and dust-free environment



ELREHA

ELEKTRONISCHE REGELUNGEN GMBH

Technical Manual **5320022-0005e00**

2021-01-29, tkd/wr

ELREHA Gateway Web Solution 2.0

from Software Version 3.5.1

Content

	Page
Supported Controllers	2
Access Configuration / Login	2
Overview	2
Page 'Evaluation' (Graphical Overview)	3
Page 'Sorting of controllers'	3
Overview about the settings of all controllers	4
Function Pages	
Page 'System Configuration'	5
Page 'Line'	5
Adding a new line with new controllers	6
Adding a new line with VPR	6
Page 'Access to IT data'	7
Page 'Fault Signal Forwarding'	8
Page 'Logbook'	9
Page 'General'	9
Page 'Email Account'	10
Page 'Users'	11
Page 'Plant Log'	12
Page 'Firmware Update'	13
Page 'Import / Export'	13
Page 'Historical Errors'	14
Page 'Current errors'	14
Page 'HACCP'	15
Page 'HACCP forwarding'	16
Page 'Database Backup'	16
Call Manual / Logout	17



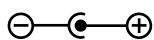
The ELREHA Gateway
can be operated with
these browsers:

Internet Explorer from version 9
Mozilla Firefox from version 35
Microsoft Edge from version 12
Google Chrome from version 47



**Please note the
Safety Instructions !**

Electrical Connection



Power Supply Connector
Power Supply
12V DC, 5A

Dimensions (H x W x D) 46 x 134 x 124 mm
Ambient conditions
for operation: -20°C...60°C
0-95% relative humidity,
not condensing
Clean only with damp cloth

without function

Ethernet/Network 2
Fixed IP-Address
169.254.1.100

Ethernet/Network 1
DHCP (factory set)
and adjustable

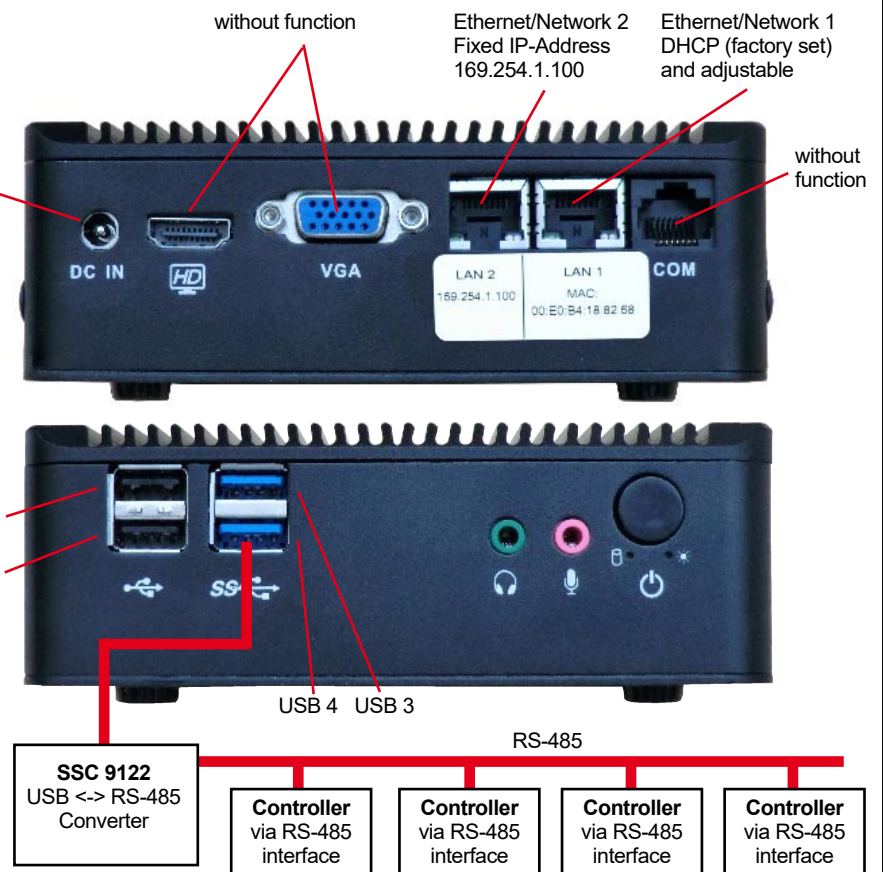
without
function

USB 1
USB 2

USB 4 USB 3

Controller networking via SSC <-> RS-485 Interface

The ELREHA Gateway communicates via an SSC-9122 interface converter and an RS-485, 2-wire connection with up to **64** controllers on a bus. Each controller that is connected to the ELREHA Gateway is assigned an individual address.



Supported Controllers

BMT	EVP 1130	EVP 1140	EVP 3150-2	EVP 3167	EVP 3168	HMR 3168	MSReco 3130	MSReco 3140	SM 501	SMZ	TAR x260-2	TAR x700-2	TAR x810-2	TAR x820-2
V1.0.1-V1.0.6	V1.02-V1.05	V1.03-V1.06	V1.58-V1.61	V1.03-V1.06	V1.02-V1.05	V1.0-V1.01	V1.01-V1.04	V0.53-V2.04	V1.0.1	V3.56-V3.59	V1.03, V2.0.0	V1.0.0	V1.0.1-V1.0.5, V2.0.0-V2.0.2	V1.0.0

TKP 19130/19140 TKP 3130,-40.-50	USP	VBZ 3006-2	VPR 5240-2	Daikin Outdoor Unit	Daikin Booster Unit	Daikin RTD	Diris A10	Diris A40
V2.10-V7.00	V1.31	V1.0.4	V02.17.04, V 02.18.00, V02.18.08, V02.19.00, V02.19.01, V02.20.00, V02.20.01	supported	supported	supported	supported	supported

Access Configuration

The configuration of the ELREHA Gateway must be done via the line Ethernet/Network 2. The IP-address is factory set to

169.254.1.100

1. The ELREHA Gateway is connected to the available network, or even directly via a Cross Over Ethernet Cable.



The Ethernet cable connection must already be in place before the ELREHA Gateway is switched on.

2. Depending on the operating system, it may be necessary to change the IP address of the PC to the following range: 169.254.1.xxx.
Otherwise, the ELREHA Gateway may not be detected.

3. Start browser and enter http://169.254.1.100 in the address bar. Please do not enter „www“ as part of the address. This will result in the ELREHA Gateway not being found and the following failure message will be displayed:
'Page not available/Seite nicht verfügbar'.

4. A „login“ window will appear requesting a Username and Password to be entered. The default for both entries is 'admin'. The Username and Password can be changed by selecting 'Settings/Users'.



Overview

Once the user is logged in, an Overview page will appear, which will display all the current parameters of any controllers connected to the system, including temperatures, setpoints, and failure messages.

Via the Menu on this page, the user is also able to access all sub-pages, and can also view graphs of temperature sequences.

Language

Menu

Information about the plant and the location

Probe inputs 1-7. The Name/Function will fade in when the user hovers the cursor over each line.

Overview	Status	F1	F2	F3	F4	F5	F6	F7	Setpoint	Line / Address
Störmelder SM501	Red icon	----	----	----	----	----	----	----	----	2 / 6
VPR Verbundsteuerung	Red icon	----	----	----	----	----	----	----	----	1 / 1
Kühlraum 1	Green icon	-26.0 °C	off	off	off	off	off	off	-20.0 °C	1 / 1-30
TKP 108	Green icon	24.4 °C	off	off	off	off	off	off	35.0 °C	1 / 1-108
Störmelder	Red icon	----	----	----	----	----	----	----	----	2 / 79
TK Raum 2	Green icon	-16.5 °C	-18.2 °C	off	off	off	off	-17.3 °C	-13.4 °C	2 / 0
Mehrstufenregler	Green icon	-9.9 °C	0.0 °C	----	----	----	----	----	-20.0 °C	2 / 1
Eiscreme	Green icon	-10.5 °C	-53.5 °C	----	----	----	----	----	-25.5 °C	2 / 2
3-Punkt Regler	Green icon	-7.4	off	----	----	----	----	----	10.0 °C	2 / 3
Moprorregal 1	Green icon	----	----	----	----	----	off	off	-20.0 °C	2 / 4
Verbundregler 2	Red icon	----	----	----	----	----	off	----	0.0 °C	2 / 19
BMT 1	Green icon	----	----	----	----	----	----	----	----	2 / 30
BMT 2	Green icon	----	----	----	----	----	----	----	----	----
TAR 3810-2 K3	Green icon	----	----	----	----	----	----	----	----	----

Red: Indicates current failure(s).
Grey: Indicates all okay.
White: Device status is being read.

Cooling station integrated in the upper VPR

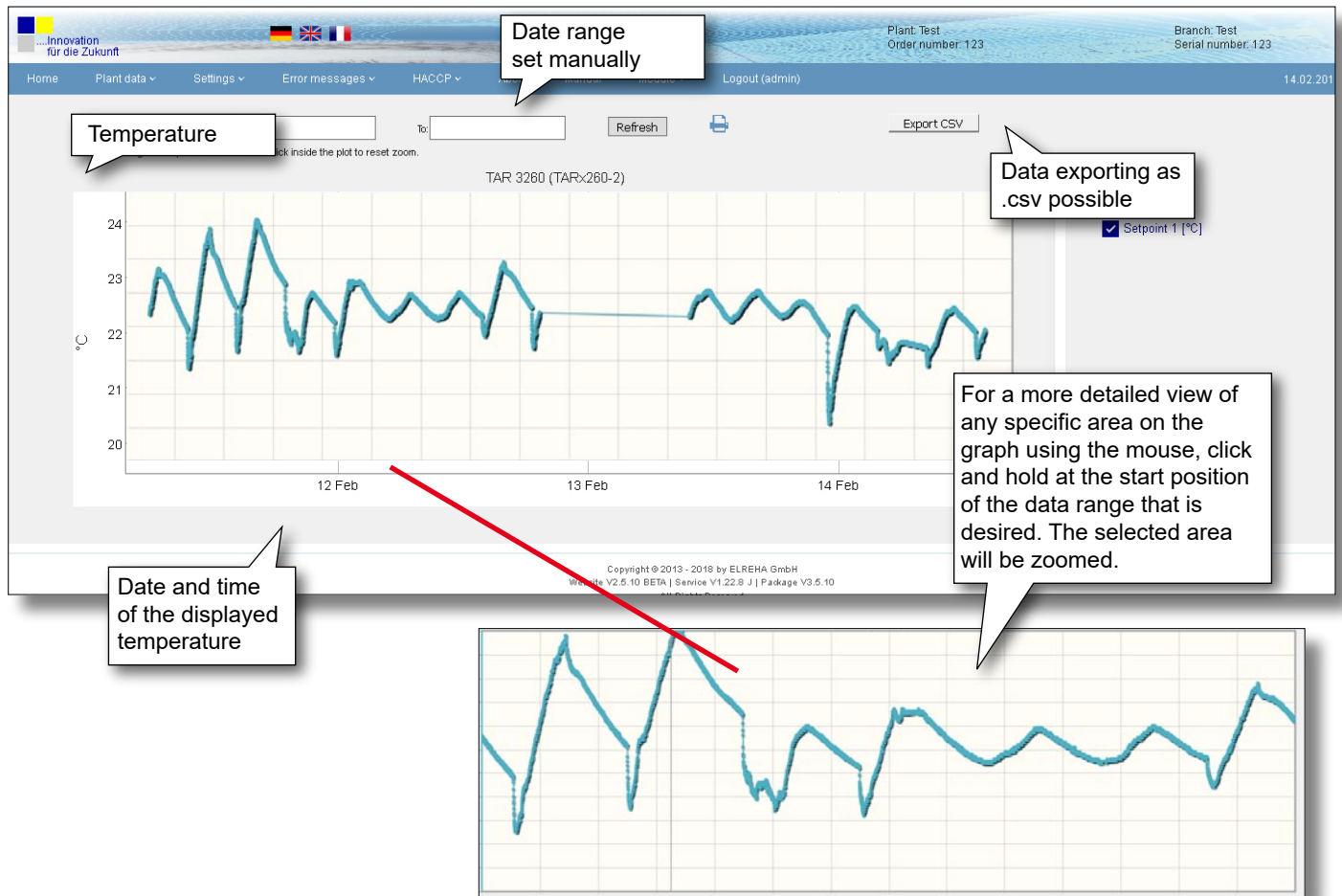
By selecting a device in this column, an Overview Page will be displayed for that device.
By hovering over a device in this column, the Controller Type will be displayed.

Evaluation =
Select to access Graph Overview

Page 'Evaluation' (Graphical Overview)

By selecting the 'Evaluation' icon for any device on the 'Overview Page', a new page will be displayed with a graph of all the actual data points. The user can zoom into specific time periods and data

points at any time. By double clicking, the whole view can then be restored.



Page 'Sorting of controllers'

On this page the controller list displayed on the start page can get sorted using drag and drop.

Overview

Line / Address	Controller
1 / 77	TAR 3260
1 / 5	GER
2 / 1	VPR52-40-2
1 / 79	SMZ Nummer 1

Save

Changes can get saved here

Overview about the settings of all Controllers

On this page all configured controllers will be shown with their subdirectories and set/settable parameters.

Grey fields indicates that the value has not yet been read and cannot be changed. Each controller type is displayed individually.

The selected device will always be displayed here.

Links to subpages

Links to different controller pages

Erases all unsaved changes

All adjusted/ current settings will be saved.

Use the 'TAB' key to shift focus from field to field.
Any new entries will only be saved by selecting the 'Save' button on the page.

In the VPR system integrated cold storage controllers will be displayed in the VPR directory under "Cold storage controllers".

Function Pages

In the menu 'Plant data' you can find all necessary settings for the configuration of the ELREHA Gateway.

Page 'System configuration'

At this page you will find the overview with information about the used interfaces and the number of connected controllers.

Select to enter and set the maximum storage

Select to add/configure a new controller line

Select to access the Line Configuration. Changes cannot be made here.

Select to edit entries on a specific line

Erase all entries

Page 'Line'

Use this page to enter the controllers which are connected to the ELREHA Gateway.

Basic Entries

Description

Name assigned to the connection.

Type

Data connection type being utilized.

Port device

Method of interface (Ex. USB, etc.).

Timeout

Remaining time until time-out expressed in seconds.

Transmission rate

Maximum transmission speed in Baud, e.g. 9600, 57600

Select to save changes

Select to add a new controller

Selecting this box will delete the entry when the „Save“ button is clicked.

Under the 'Controller List', all controllers that are entered will be listed. Only the host and the recording intervals can be changed in this list.

Adding a new line with new controllers

Fields with * are required.

Line No. - Description: Timeout [s]: **Description of the controller position**

Controller type * **Selection of the controller type**

Record interval [min] **Record interval**

HACCP interval [min] **HACCP interval min.**

Address * **Address of the controller on the line**

Controller Overview

Recording Settings **Add**

HACCP-Settings **Add**

The name of this information

Min. and max. values

Save all parameters

Recording Settings

- Actual temperature 1
- Actual temperature 2
- Actual temperature 3
- Actual temperature 4
- Actual temperature 5
- Virtual temperature value
- Actual Overheat Temperature
- Current setpoint
- Actual Value of the analog output
- Opening EEX-Valve average
- Digital input 1
- Digital input 2
- Relay status 1
- Relay status 2
- Relay status 3
- Relay status 4

This field specifies which values to record.

HACCP-Settings

- Actual temperature 1
- Actual temperature 2
- Actual temperature 3
- Actual temperature 4
- Actual temperature 5
- Virtual temperature value

This field specifies which values will be displayed in the HACCP Overview.

i !

- When creating a new line, the correct interface method must be selected, (Ex. USB0, etc.).
- In order to connect an SMZ device to a line, all other controllers must be separated and configured as 'Slave' devices to the SMZ.

Adding a new line with VPR

Is a VPR selected at this line, only cold storage controllers can be integrated to the VPR.

min. 8 sec.

Select elreha-udp here

IP-Address and port VPR. Format: IP:Port. If no port is given, the default port of the VPR will be used (55555).

Here the page will be opened which can be used to configure a new control line.

Room temperature

- Room humidity
- [1] Suction pressure actual value
- [2] Suction pressure actual value
- [1] Suction temperature actual value
- [2] Suction temperature actual value
- [1] Suction pressure actual value
- [2] Suction pressure actual value
- [1] Suction temperature actual value
- [2] Suction temperature actual value
- [1] Circ. 1 Condensation pressure actual value
- [2] Circ. 1 Condensation pressure actual value
- [1] Condensation temperature actual value
- [2] Condensation temperature actual value
- [1] Circ. 2 Condensation pressure actual value
- [2] Circ. 2 Condensation pressure actual value
- [1] Condensation temperature actual value
- [2] Condensation temperature actual value
- [1] Circ. 3 Condensation pressure actual value
- [2] Circ. 3 Condensation pressure actual value
- [1] Condensation temperature actual value
- [2] Condensation temperature actual value
- [1] Circ. 1 Condensation pressure actual value
- [2] Circ. 1 Condensation pressure actual value
- [1] Condensation temperature actual value
- [2] Condensation temperature actual value
- [1] Circ. 2 Condensation pressure actual value
- [2] Circ. 2 Condensation pressure actual value
- [1] Condensation temperature actual value
- [2] Condensation temperature actual value

After a new line has been created for a VPR, this page appears after the call, which also contains an overview of the controllers connected to the VPR.

Page 'Access to IT data'

On this page you will find all settings which are necessary to integrate the ELREHA Gateway into a network.

DHCP

When the DHCP box is selected, the IP address, the subnet mask, and the gateway will be applied automatically. The same information will need to be entered manually if this box is not selected.

IP Address

Address in the network

Subnet mask

Mask setting of the network

Gateway

IP address for the outside connection

DNS

Nameserver

Time server

Server for synchronization of the time of day, e.g.: de.pool.ntp.org

With 'Save' all parameters will be saved



After saving, the server will reboot in order to apply the changes. The server will not be accessible during this time.



Standard HTTP access occurs via port 80, via Port 443 can be accessed by HTTPS (Hypertext Transfer Protocol Secure) to the Gateway.

Depending on which port is enabled in the customer's network, the access can be enforced via HTTP or HTTPS. If both ports are unlocked, the access is possible via HTTP or HTTPS.

Page 'Fault signal forwarding'

With the link 'Add signal forwarding' a configuration page will be called up.

Channel

Select the method to forward the message.

Description

Select to enter a comment or description.

Days of the week

Select which days to enable message forwarding.

from - to

Select to define the period within which messages will be forwarded.

Fields with * are required.

Forwarded as * E-Mail language

Description *

Days of the Week * ☐ Mon ☐ Tue ☐ Wed ☐ Thu ☐ Fri ☐ Sat ☐ Sun

From - To * -

Time Control message Time must be from 00:00 to 23:59

☐ System

☐ Line 1: System

☒ 1/1 VPR Verbundsteuerung (VPR120)

☒ 1/1-1 Kühlraum 1 (EVP3167)

☐ Line 3: System

☒ 3/2 Mein EVP 1140 (EVP1140)

☒ 3/45 SMZ (SMZ)

☒ 3/66 EVP3150-2 (EVP3150-2)

☒ 3/77 TAR 3260 (TARx260-2)

Select all Clean all

☒ 0 - No failure

☒ 1 - Breakage Sensor 1: Istwert 1

☒ 2 - Short-circuit Sensor 1: Istwert 1

☒ 3 - Over temperature Sensor 1: Istwert 1

☒ 4 - Under temperature Sensor 1: Istwert 1

☒ 5 - Breakage Sensor 2: Istwert 2

☒ 6 - Short-circuit Sensor 2: Istwert 2

☒ 7 - Over temperature Sensor 2: Istwert 2

☒ 8 - Under temperature Sensor 2: Istwert 2

☒ 9 - Optocoupler 1

☒ 10 - Optocoupler 2

☒ 11 - Break current input

☒ 12 - Short-circuit current input

☒ 10001 - Timeout

Select to test the current email settings. The existing settings for mailserver and email account will be used.

Select to save and changes.

Email language: adjustable to: email recipient cc: copy to bcc: hidden copy to

Each device can be assigned an individual error message to be forwarded.

Select the failure message to be forwarded.

Host

SMTP mailserver

Connection Security

Here the corresponding methods can be selected

SMTP-Port

Mailserver port

User / Password

The necessary data for transmission

Home » Plant data » Fault signal forwarding

+ Add signal forwarding

Displaying 1-1 of 1 result.

Description	Forwarded as	Days of the Week	From - To	
test_150	email	Mon - Tue - Wed - Thu - Fri - Sat - Sun	00:00 - 23:59	

When the 'Fault Signal Forwarding' page is opened, any existing entries will be displayed in an overview list. This can be edited at any time.

Page 'Logbook'

On the page 'Logbook' controller and parameter changes as well as special events are logged.

Select the time range to display.

Printing

Date / Time	Controller name	Controller type	Parameter	Old value	New value	User	Description
29.07.2016 / 11:58	----	----	----	----	----	admin	plant.xml changed
29.07.2016 / 11:58	----	----	----	----	----	admin	plant.xml changed
25.07.2016 / 16:22	----	----	----	----	----	admin	plant.xml changed
25.07.2016 / 16:22	----	----	----	----	----	admin	plant.xml changed
25.07.2016 / 16:22	----	----	----	----	----	admin	plant.xml changed
25.07.2016 / 16:18	----	----	----	----	----	admin	plant.xml changed
25.07.2016 / 16:18	----	----	----	----	----	admin	plant.xml changed
25.07.2016 / 16:18	----	----	----	----	----	admin	plant.xml changed
25.07.2016 / 16:18	----	----	----	----	----	admin	plant.xml changed
25.07.2016 / 16:18	----	----	----	----	----	admin	plant.xml changed
25.07.2016 / 16:17	----	----	----	----	----	admin	plant.xml changed
25.07.2016 / 16:17	----	----	----	----	----	admin	plant.xml changed
25.07.2016 / 16:17	----	----	----	----	----	admin	plant.xml changed
25.07.2016 / 16:16	----	----	----	----	----	admin	plant.xml changed
25.07.2016 / 16:16	----	----	----	----	----	admin	plant.xml changed

Page 'General'

Here all information about the plant can be entered.

URL to Gateway. Is then located as info in the fault forwarding emails

With 'Save' all entries will be stored

The information marked with '*' will be displayed at the top right corner of each page.

Page "Email Account"

The email account used to send the fault signal emails is defined here.

The screenshot shows the 'Email Account' configuration page in the ELREHA Gateway interface. The page has a blue header with the logo and navigation tabs: Home, Plant data, and Settings. The 'Settings' tab is active, and a dropdown menu is open, showing options like System configuration, Fault signal forwarding, General, Email Account (selected), Plant log, Access to IT data, Logbook, and Sorting of controllers. The main form contains the following fields and callouts:

- From ***: test@elreha.de (Callout: Address of sender)
- Host ***: smtp.strato.de (Callout: Provided by the provider)
- SMTP Port**: 587 (Callout: Provided by the provider)
- Connection security**: STARTTLS (Callout: Provided by the provider)
- User ***: test@elreha.de (Callout: User name mailaccount)
- Password**: (Callout: Password)
- Test mail to**: (Callout: Here can be send a testmail to (xx@xx.xx))

Buttons for 'Cancel' and 'Save' are at the bottom left of the form.

Host

SMTP Mailserver

Connection security

The relevant protocols are defined here

SMTP Port

Mailserver Port

User / Password

The data required for transmission

Page 'Users'

This page is used to define and enter user access and rights.
The system provides 4 levels of user access from 'Administrator' to 'Read Only'.

Overview about all entered users and their access rights

Username	Name	Access rights	
admin	admin	Administrator	100000
admin2	test2	Administrator	60

Displaying 1-2 of 2 results.

Fields with * are required.

Username *

Name *

Password *

Repeat password *

Expire time in seconds *

Access rights *

Save

All fields marked with '*' must be filled.
With a click here, the new user will be confirmed and stored.

Fields with * are required.

Username

Name *

Expire time in seconds *

Access rights *

Save

Access Rights

- 1 : Administrator
- 2 : Service
- 3 : Technician
- 4 : Customer / read only

1. Administrator Rights / Possible Settings

- All Access Rights
- Read User Information
- Adding User
- Erase User
- Edit User

2. Service Rights (rights 3 + 4 possible)

- Change Plant Configuration
- Erase Plant Configuration

3. Technician Rights (right 4 possible)

- Alarm Forwarding, setting and changing
- Erasing of set Alarm
- Write/Edit Controller Parameters

4. Customer / read only

- Read Current Failures
- Read Historic Failures
- Read set Alarm Forwardings
- Read Plant Configuration
- Read Controller Parameters



At least one access with administrator rights must be created. If this is not done and only the access right 2-4 are used, the ELREHA Gateway can not longer be fully administrated.



The preset user („admin“) should be replaced by a separate user when commissioning the ELREHA Gateway. To do this, a new user with „Administrator“ access rights needs to be created. The default user should then be deleted.

Page 'Plant Log'

Here each user is able to enter notes to keep track e.g. at which time changes has been done or problems have been encountered at specific times.

Add a new note

Overview listing about all entered notes

10 entries per list, here the next lists can be called up.

Subject	Date	User
test1	09.05.2017	admin
test2	09.05.2017	admin
test3	09.05.2017	admin
test4	09.05.2017	admin
test5	09.05.2017	admin
test6	09.05.2017	admin
test7	09.05.2017	admin
test8	09.05.2017	admin
test9	09.05.2017	admin
test10	09.05.2017	admin

Fields with * are required.

Date: 09.05.2017
User: admin

Subject *

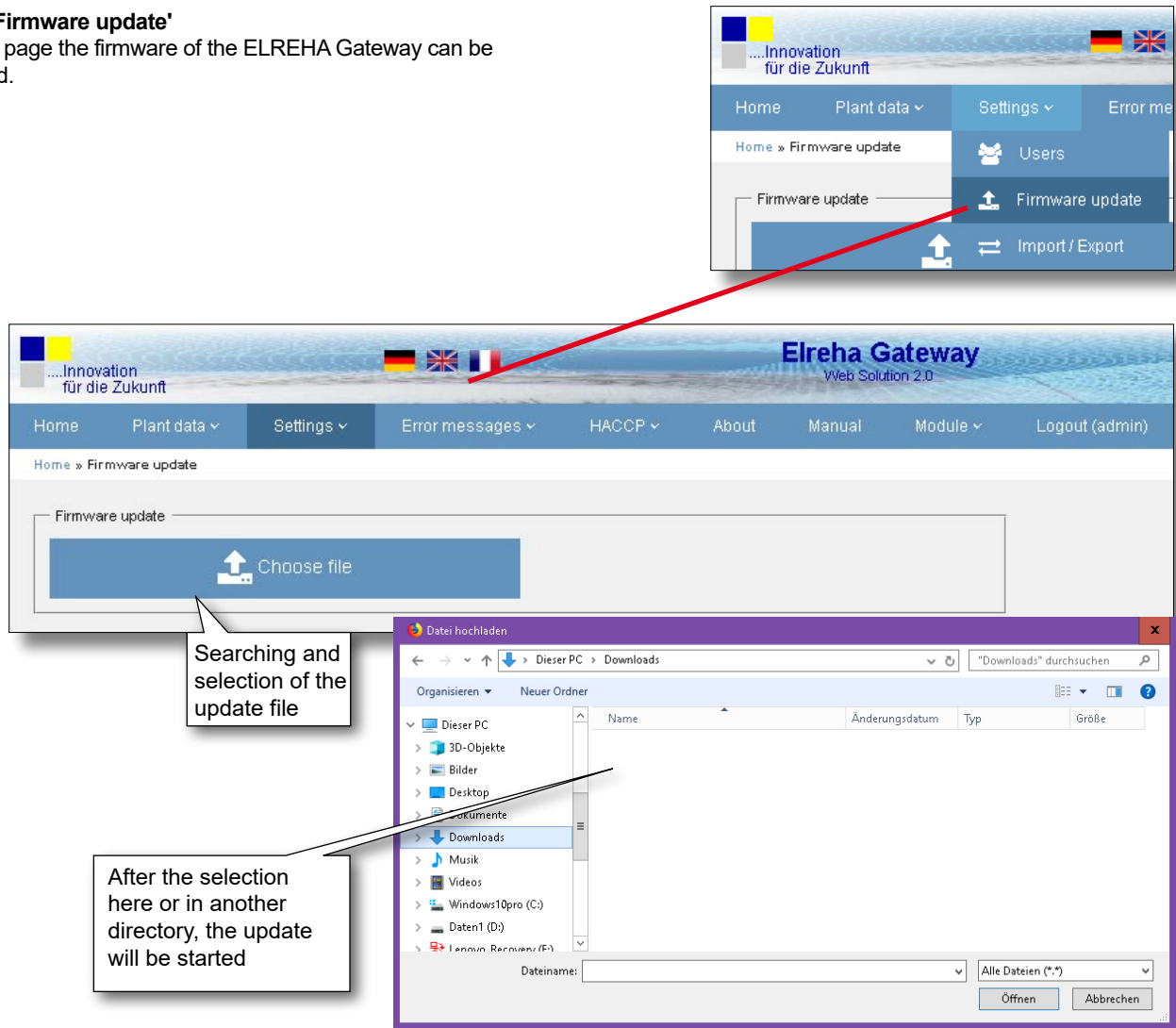
Note

Save

All fields marked with ' * ' must be filled.
Confirm the new entries with a click on 'Save'.

Page 'Firmware update'

On this page the firmware of the ELREHA Gateway can be updated.



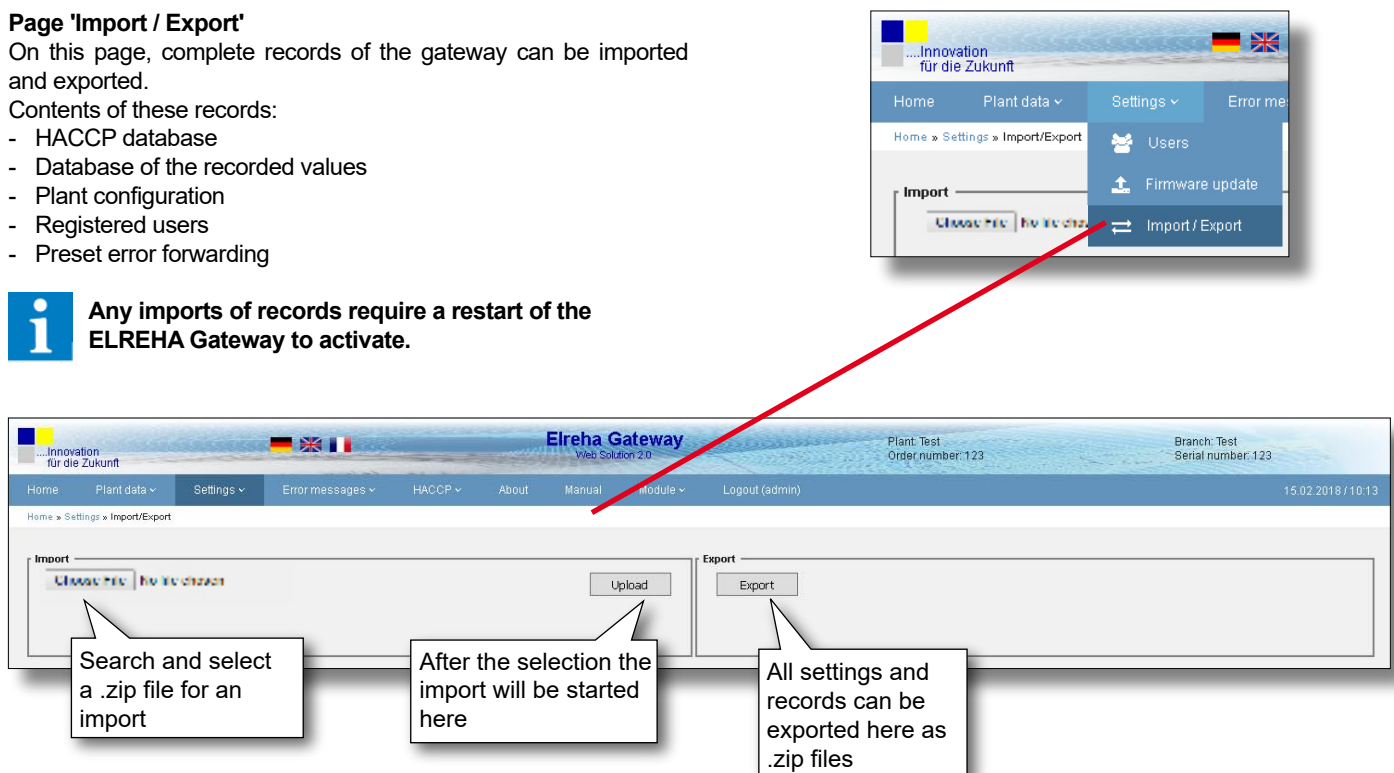
Page 'Import / Export'

On this page, complete records of the gateway can be imported and exported.

Contents of these records:

- HACCP database
- Database of the recorded values
- Plant configuration
- Registered users
- Preset error forwarding

i Any imports of records require a restart of the ELREHA Gateway to activate.

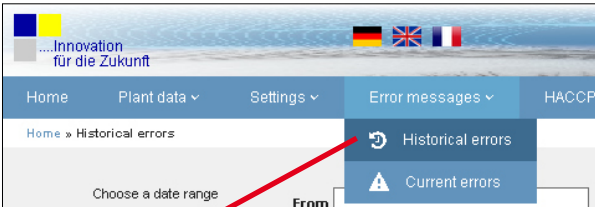


Page 'Historical errors'

This page offers an overview about all recorded alarm messages. These can be selected in a date range.



Current error messages are not displayed here!



Elreha Gateway Web Solution 2.0

Plant: Test Order number: 123 Branch: Test Serial number: 123

07.03.2018 / 10:38

Home » Historical errors

Choose a date range From To Refresh Clear search Delete

Appear	Disappear	Controller name	Forwarded	Comment 1	Comment 2
05.03.18 /15:05	06.03.18 /10:58	VPR5240-2	VPR5240-2	Timeout	
05.03.18 /15:04	06.03.18 /10:59	XML&TÜst Konfig	VPR5240-2	Asymmetric	
02.03.18 /10:54	05.03.18 /15:04	VPR5240-2	VPR5240-2	Timeout	

2540 results.

Select time range for the list

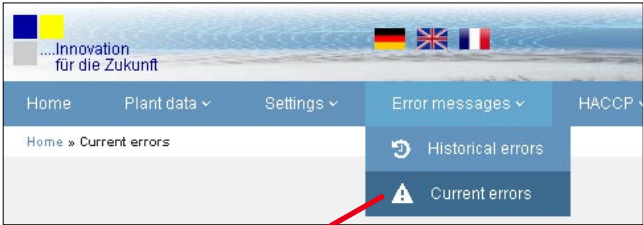
Delete all entries

Comments can be entered and saved here

Save

Page 'Current errors'

This page provides an overview of all current errors.



Elreha Gateway Web Solution 2.0

Plant: Test Order number: 123 Branch: Test Serial number: 123

07.03.2018 / 10:40

Home » Current errors

Displaying 1-5 of 5 results.

Appear	Controller type	Controller name	Error	Forwarded	Comment
07.03.18 /10:39	VPR5240-2	VPR5240-2	:		
06.03.18 /11:00	VPR5240-2	VPR5240-2	:		
06.03.18 /10:59	VPR5240-2	XML&TÜst Konfig	: Asymmetric		
06.03.18 /10:59	VPR5240-2	XML&TÜst Konfig	: EmergOFF		

Comments can be entered and saved here

Save

Page 'HACCP'

This page provides an overview of selected data points from various time periods. These can be printed at any time.



For printing HACCP data, the browser must allow pop up windows for the Gateway Website.



Select to update any changes to the dates or addition of new devices.

Here you can select the time range for printing of the HACCP table

Here you can select any date, day, week and month overview

Start printing

Currently displayed HACCP table

Choose a date range: From: To:

Currently displayed HACCP table

Choose a date range: From: To:

Choose a date: Daily information Weekly information Monthly information Refresh

Controller: 1/1 K Verbund 1, 1/2 Kaskade1, 1/3 Normalkühlraum, 1/4 MoPro Regal, 1/5 Lüftersteuerung

Temperature > Max (Red), Temperature < Min (Blue), Defrost (Yellow)

Daily information: 04.08.2016

Symbols

- Break
- Short Circuit
- Failure
- No Connection
- Defrost



Colours: ■ Temperature > max.
■ Temperature < min.
■ Defrost

From: To: Export PDF

Pdf files can get exported to a USB flash drive, that is connected to the ELREHA Gateway

Controller: ☐ Select all ☐ Clean all ☐ Select

Daily information: 2015.06.08

<input checked="" type="checkbox"/> 1/1 BMT Test	<input checked="" type="checkbox"/> 1/2 TARx700-2	<input checked="" type="checkbox"/> 1/3 EVP1140	<input checked="" type="checkbox"/> 1/5 Walter	<input checked="" type="checkbox"/> 1/6 TARx260-2
<input checked="" type="checkbox"/> 1/7 Fleisch KR	<input checked="" type="checkbox"/> 1/8 Kaskaderegler a	<input checked="" type="checkbox"/> 1/9 TARx260-2	<input checked="" type="checkbox"/> 1/11 TARx810-2	<input checked="" type="checkbox"/> 1/12 USP
<input checked="" type="checkbox"/> 1/40 EVP 3150-2	<input checked="" type="checkbox"/> 1/41 MSR ECO	<input checked="" type="checkbox"/> 1/55 TARx260-2	<input checked="" type="checkbox"/> 1/56 SM501	

Select the device and HACCP data to be displayed.

Page 'HACCP forwarding'

From this page you can send HACCP information as email.
This information is included in an attached pdf file.

Language
German, English, French

Description
As you like

Forwarding Time
From 00:00 up to 23:59 o'clock

To
Recipient email address

cc
Carbon copy email address

Page 'Database Backup'

Internal databases are automatically saved to a USB flash drive that is connected to the ELREHA Gateway at the given time.

Database Backup Active ☒

Backup Time : 11:34

Backup Interval : Every 1 Day

Settings of 'Every 1 Day' up to 'Every 30 Days' possible

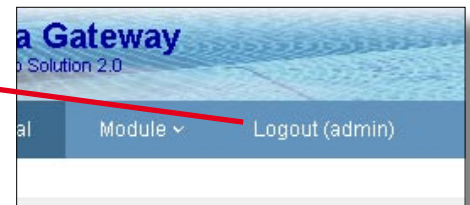
Manual

Here you can open the manual for this product



Logout

Due to safety reasons, it is recommended to log out after every session.



CONNECTION INFORMATION & SAFETY INSTRUCTIONS



Notice

The guarantee will lapse in case of damage caused by failure to comply with these operating instructions! We shall not be liable for any consequent loss! We do not accept liability for personal injury or damage to property caused by inadequate handling or non-observance of the safety instructions! The guarantee will lapse in such cases.

This manual contains additional safety instructions in the functional description. Please note them!



Danger

If you notice any damage, the product may not be connected to mains voltage! **Danger of Life!**

A riskless operation is impossible if:

- The device has visible damages or doesn't work
- After a long-time storage under unfavourable conditions
- The device is strongly draggled or wet
- After inadequate shipping conditions

• Never use this product in equipment or systems that are intended to be used under such circumstances that may affect human life. For applications requiring extremely high reliability, please contact the manufacturer first.

• **Electrical installation and putting into service must be done from qualified personnel.**

• **During installation and wiring never work when the electricity is not cut-off ! Danger of electric shock!**

• **Never operate unit without housing. Danger of electric shock!**

• Please note the safety instructions and standards of your place of installation!



Caution

- Before installation: Check the limits of the ELREHA Gateway (see tech. data), e.g.:
 - Supply voltage
 - Environmental limits for temperature/humidity. Outside these limits malfunction or damages may occur.
- Mounting the controller close to power relays is unfavourable. Strong electro-magnetic interference, malfunction may occur!
- Take care that the wiring of interface lines meets the necessary requirements.



This device complies with the requirements of EU directives 2014/30/EC and 2014/35/EC as well as the applicable standards. The declaration of conformity is deposited at the following address:

ELREHA Elektronische Regelungen GmbH

Schwetzingen Str. 103 D-68766 Hockenheim Phone: +49 6205 2009-0 E-mail: sales@elreha.de



Notice

NOTICE

This manual has been set up with care and our best knowledge. We reserve the right to change this manual for any reason, including but not limited to technical updates. Please make sure your device complies with the model described herein.

Date of commissioning		
Server Number		
Contact Person IT / Phone Number		
Notes		
	Entry	Example
Network		
DHCP / static		
IP address Gateway internal		(e.g. 192.168.1.2)
Subnet mask		(e.g. 255.255.255.0)
DNS		(e.g. 192.168.1.1)
Default Gateway		(e.g. 192.168.1.1)
Time server		(e.g. de.pool.ntp.org)
IP address Gateway external		
Port 80 internal: Forwarding to external port		
Port 443 internal: Forwarding to external port		
Port 22 internal: Forwarding to external port		
Email		
Return Address		(e.g. störung_kaelte@mustermann.de)
User Name		(e.g. störung_kaelte@mustermann.de)
Password		(e.g. secret)
Outgoing Mail Server		(e.g. smtp.strato.de)
Port Outgoing Mail Server		(e.g. 465, 587,...)
Security Setting Mail Server		(e.g. no, SSL, STARTTLS)
Register Address 1		(e.g. service@kaelte.de)
Register Address 2		(e.g. service@kaelte.de)
User 1		
User name		
Password		
Authorization		(e.g. Customer, Service, Technician, Administrator)
Time up to automatic logout		

	Entry	Example
User 2		
User name		
Password		
Authorization		(e.g. Customer, Service, Technician, Administrator)
Time up to automatic logout		
User 3		
User name		
Password		
Authorization		(e.g. Customer, Service, Technician, Administrator)
Time up to automatic logout		
Line 1		
Interface		(e.g. COM 1)
Baudrate		(e.g. 9600 Baud)
Timeout		
Controller 1		
Type		(e.g. EVP 1130)
Address		(e.g. 5)
Controller 2		
Type		
Address		
Controller 3		
Type		
Address		
Controller 4		
Type		
Address		
Controller 5		
Type		
Address		
Controller 6		
Type		
Address		

	Entry	Example
Controller 7		
Type		(e.g. EVP 1130)
Address		(e.g. 5)
Controller 8		
Type		
Address		
Controller 9		
Type		
Address		
Controller 10		
Type		
Address		
Controller 11		
Type		
Address		
Controller 12		
Type		
Address		
Controller 13		
Type		
Address		
Controller 14		
Type		
Address		
Controller 15		
Type		
Address		
Controller 16		
Type		
Address		
Controller 17		
Type		
Address		

	Entry	Example
Controller 18		
Type		(e.g. EVP 1130)
Address		(e.g. 5)
Controller 19		
Type		
Address		
Controller 20		
Type		
Address		
Controller 21		
Type		
Address		
Controller 22		
Type		
Address		
Controller 23		
Type		
Address		
Controller 24		
Type		
Address		
Controller 25		
Type		
Address		
Controller 26		
Type		
Address		
Controller 27		
Type		
Address		
Controller 28		
Type		
Address		

	Entry	Example
Controller 29		
Type		(e.g. EVP 1130)
Address		(e.g. 5)
Controller 30		
Type		
Address		
Controller 31		
Type		
Address		
Controller 32		
Type		
Address		
Controller 33		
Type		
Address		
Controller 34		
Type		
Address		
Controller 35		
Type		
Address		
Controller 36		
Type		
Address		
Controller 37		
Type		
Address		
Controller 38		
Type		
Address		
Controller 39		
Type		
Address		

Vorgaben zur Installation:

Dieses Gerät ist ausschließlich für den Einsatz in ortsfesten Anlagen vorgesehen.

Installation Requirements:

This device is intended for use in stationary installations only.

